

**TAMWORTH  
TURF PRECINCT  
MASTERPLAN**







# CONTENTS

Introduction .....	4
Strategic Alignment .....	6
Community Engagement .....	7
Considerations .....	7
Stage 1: Old Netball Courts Masterplan .....	8
Stage 2: Marius Street Masterplan .....	TBC
Stage 3: Locks Lane Masterplan .....	TBC



**Tamworth Regional Council**  
Tamworth Turf Precinct Masterplan, prepared by the  
Regional Services Directorate of Tamworth Regional Council



# INTRODUCTION

Tamworth Regional Council (Council) acknowledges the significant contribution that sport and recreation bring to the community. Council is in the unique position of having available land to develop into future sporting fields. The planning and design of such facilities needs to be carefully considered to ensure that the needs of the community are addressed now and into the future. The Tamworth Turf Precinct Masterplan provides a roadmap for infrastructure development to align with the planned growth identified in the Blueprint 100 Strategy.

This development will be completed in the following three stages:

- stage 1: Old Netball Courts Turf Fields Masterplan (refer image 1);
- stage 2: Marius Street Turf Fields Masterplan (refer image 2); and
- stage 3: Locks Lane Turf Fields Masterplan (refer image 3).



Image 1: Stage 1, Old Netball Courts Masterplan.





Image 2: Stage 2, Marius Street Masterplan.

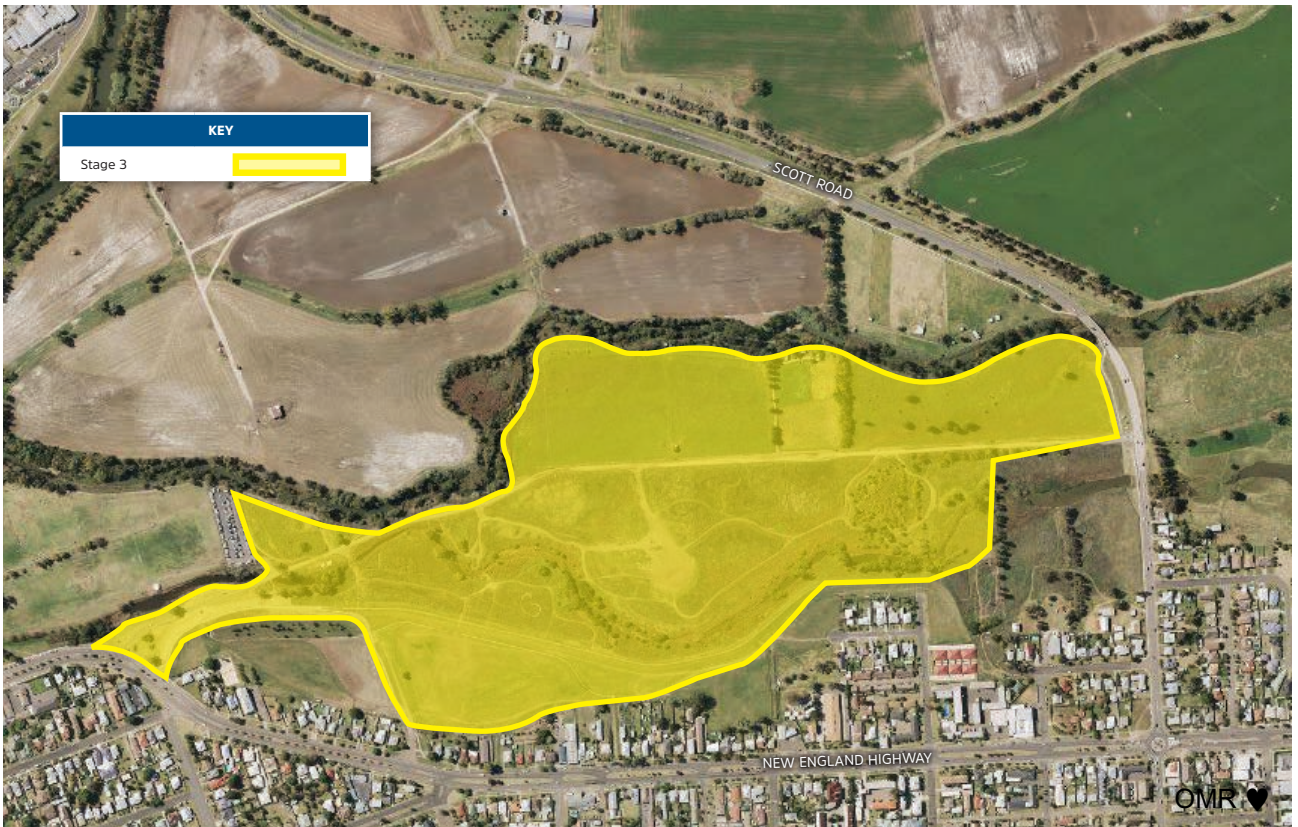


Image 3: Stage 3, Locks Lane Masterplan.



# STRATEGIC ALIGNMENT

The strategic direction for sport and recreation is influenced by a number of strategies. The Tamworth Turf Precinct Masterplan aligns with the planned population growth identified in Council’s Blueprint 100 Strategy and the sport participation growth and facility requirements identified in the Sport and Recreation Strategic Plan.



Blueprint 100 is a strategy to guide future use of land within the region towards a population of 100,000 people. It will ensure that there is sufficient infrastructure and opportunities for jobs growth and great places for people to live. Population growth will bring with it an increase in sport participation and use of Council’s facilities to undertake these pursuits. The

Tamworth Turf Precinct Masterplan will ensure that popular field sports in Tamworth can continue to service growing memberships and provides additional facilities to alleviate the detrimental impact of the overuse of playing fields.

Dovetailing with Blueprint, the Sport and Recreation Strategic Plan projects facility requirements based on population trigger points as the population increases. This will ensure Council is prepared to service the future sporting needs of the community and visitors to the Council area. The population trigger points for each stage are identified in Table 1. The need for this masterplan is identified in Action 2 of the Sport and Recreation Strategic Plan. This action details Council is to “ensure that Tamworth Regional Council offers a balanced variety of regional-level sport and recreation facilities across the LGA which provide for the needs of Northern Inland NSW as well as local participants and attract tournaments, events and visitors from beyond this catchment”. Part of achieving action 2 is sub action 2.5, preparation of the Riverside Turf Precinct Masterplan.

The Riverside Sporting Complex is a key venue for field sports in Tamworth, providing for a wide range of popular activities across many multi-use playing fields. Council’s Sport and Recreation Strategic Plan identifies the undeveloped areas of the Riverside Sporting Complex offer the opportunity for the expansion of this precinct with new sports and recreation facilities, such as community accessible open space and multipurpose playing fields.

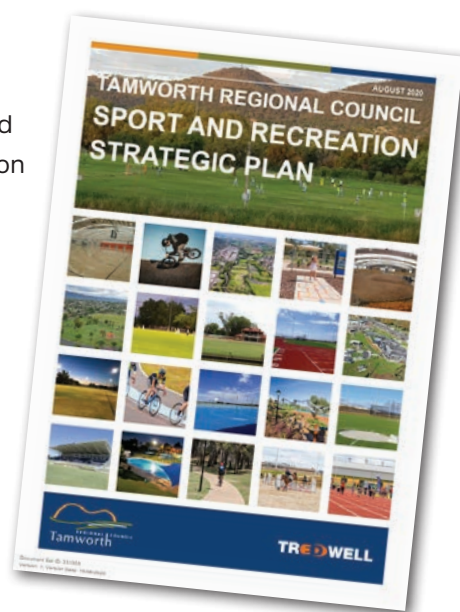


Table 1.- Stage Trigger points

STAGE	TRIGGER POINT - POPULATION
Stage 1	70,000
Stage 2	90,000
Stage 3	100,000

---

# COMMUNITY ENGAGEMENT

The consultation undertaken to produce the Tamworth Turf Precinct Masterplan was guided by a communications and engagement strategy developed in the initial stages of the project. The objective of this strategy was to ensure the key stakeholders and Sport Development Officers had the opportunity to contribute to and review the masterplan. This process ensured the aspirations of the community and stakeholders were identified and reflected in the masterplan.

## CONSIDERATIONS

Each stage of the masterplan has considered the orientation of play of each sporting field. The orientation of outdoor playing fields is an important planning consideration. The aim is to ensure play is not directed toward the rising or setting sun with the best common orientation 15 degrees east of north.

Each stage of the masterplan has given consideration to supporting infrastructure for the users of the facilities, such as available car parking, access (via road, cycle and footpaths), sport field lighting, club house/s, and amenities. Furthermore, the final design considers the landscaping of the precinct to ensure the provision of natural shade and windbreaks.

# STAGE 1

## SCOPE

The scope of stage 1 of the Tamworth Turf Precinct Masterplan is to convert the old netball courts located at Carter Street to sports fields. This will include an oval with a turf cricket wicket and two full sized multi-use rectangle playing fields with irrigation, refer image 5.

## DESIGN

Each of the three fields are orientated correctly to ensure play is not impacted by the sun. The layout of the fields has been designed to ensure the multi-use fields do not overlap the turf wicket to minimise damage to this asset.



Image 5, Stage 1 Field layout

## NETBALL COURT REMOVAL AND REMEDIATION

The removal of the existing netball courts and supporting infrastructure will be completed in house by Council. This first stage of this process is to remove the light infrastructure and then cut to a depth of 150 millimetres below the asphalt. Following this, the site will need to be trimmed and graded level. With the development of a clean flat site, topsoil will be imported and rolled to again ensure the site is level. A cost effective method of turfing the field via seed will be adopted with a couch species preferred for sport.



## IRRIGATION

Stage 1 will be irrigated with bore water. Using this resource allows Council to continue to irrigate the playing fields for recreational use during water restrictions. An irrigation design for the stage has been completed, refer image 6. The design proposes to connect off the existing 110 millimetre supply line feeding Riverside 5 field with automation of the system from the existing controller located in the netball amenities building. There are 7 zones of Hunter I25-06-SS-B pop up sprinklers with poly mainline and laterals.



Image 6, Irrigation plan.

## COST ESTIMATES (ex GST)

Stage 1 of the Turf Precinct Masterplan has been costed at \$243,703 ex GST. This estimate incorporates using Council staff and local contractors where possible.

ITEM	COST
Old netball court removal	\$124,453
Turf wicket	\$85,000
Supply and install irrigation	\$34,250
<b>TOTAL</b>	<b>\$243,703</b>

